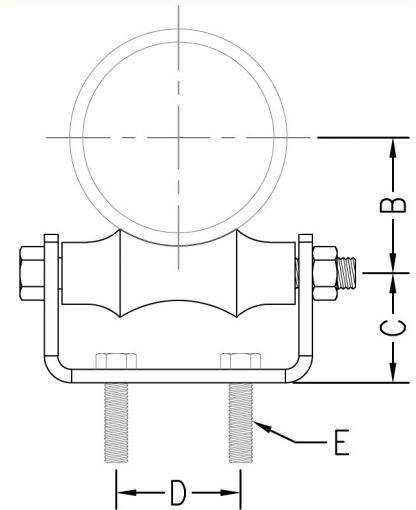


PIPE ROLLER SUPPORTS



FIG. 460

- Function:** Designed for supporting pipe in applications where horizontal movement, due to expansion and contraction, will occur but vertical adjustment is not necessary. The chair can be welded directly to the steel structure or secured in place through bolt holes.
- Sizing:** Pipe roller size shown is for bare pipe. For proper sizing with insulation, refer to pipe roller selection guide, which is for use with pipe covering protection saddles.
- Material:** Cast iron pipe roller with carbon steel chair, axle, and hex nuts. (Type 304 or 316 Stainless Steel upon request)
- Finish:** Plain or electro-galvanized (Hot dipped galvanized with electro-galvanized hardware upon request)
- Approvals:** Complies with Federal Specification A-A-1192A (Type 44) and Manufacturers' Standardization Society ANSI/MSS SP-58 (Type 44) which supersedes ANSI/MSS SP-69.
- Ordering:** Specify figure number, pipe roller size, material, and finish. Order mounting bolts separately.



Pipe Roller Size		B		C		D		Recommended Bolt Size (Not included) E	Max. Rec. Load		Wt. Each	
									lbs.	kN	lbs.	kg
2	(50)	1 ⁵ / ₈	(41.28)	1 ¹ / ₂	(38.10)	1 ¹ / ₄	(31.75)	3/8 x 1 ¹ / ₂	300	(1.33)	.90	(.41)
2 ¹ / ₂	(65)	2	(50.80)	1 ⁵ / ₈	(41.28)	1 ¹ / ₄	(31.75)	3/8 x 1 ¹ / ₂	600	(2.67)	1.19	(.54)
3	(80)	2 ¹ / ₄	(57.15)	1 ³ / ₄	(44.45)	2	(50.80)	3/8 x 1 ¹ / ₂	600	(2.67)	1.48	(.67)
3 ¹ / ₂	(90)	2 ⁵ / ₈	(66.68)	2	(50.80)	2	(50.80)	3/8 x 1 ¹ / ₂	600	(2.67)	2.44	(1.11)
4	(100)	2 ³ / ₄	(69.85)	2 ¹ / ₄	(57.15)	2	(50.80)	1/2 x 1 ¹ / ₂	700	(3.11)	2.85	(1.29)
5	(125)	3 ¹ / ₂	(88.90)	2 ¹ / ₂	(63.50)	3	(76.20)	1/2 x 1 ¹ / ₂	700	(3.11)	3.75	(1.70)
6	(150)	4	(101.60)	2 ³ / ₄	(69.85)	3 ¹ / ₄	(82.55)	1/2 x 1 ¹ / ₂	1000	(4.45)	5.76	(2.61)
8	(200)	5 ¹ / ₈	(130.18)	3	(76.20)	3 ³ / ₈	(85.73)	5/8 x 1 ¹ / ₂	1300	(5.78)	8.10	(3.67)
10	(250)	6 ³ / ₈	(161.93)	3 ⁵ / ₈	(92.08)	5 ¹ / ₄	(133.35)	5/8 x 2	1700	(7.56)	12.28	(5.57)
12	(300)	7 ¹ / ₂	(190.50)	4 ¹ / ₈	(104.78)	5 ¹ / ₂	(139.70)	5/8 x 2	2300	(10.23)	20.54	(9.32)
14	(350)	8 ³ / ₈	(212.73)	4 ¹¹ / ₁₆	(119.06)	6 ¹ / ₂	(165.10)	3/4 x 2	3100	(13.79)	25.63	(11.63)
16	(400)	9 ¹ / ₂	(241.30)	5 ³ / ₈	(136.53)	8 ¹ / ₄	(209.55)	3/4 x 2 ¹ / ₂	3900	(17.35)	37.38	(16.96)
18	(450)	10 ¹ / ₂	(266.70)	6	(152.40)	9 ¹ / ₄	(234.95)	3/4 x 2 ¹ / ₂	4200	(18.68)	45.26	(20.53)
20	(500)	11 ⁵ / ₈	(295.28)	6 ³ / ₈	(161.93)	10 ³ / ₈	(263.53)	3/4 x 2 ¹ / ₂	4500	(20.02)	52.35	(23.75)
24	(600)	14	(355.60)	7 ⁷ / ₈	(200.03)	12 ¹ / ₄	(311.15)	7/8 x 3 ¹ / ₂	6000	(26.69)	88.00	(39.92)
30	(750)	17 ¹ / ₄	(438.15)	9 ⁵ / ₈	(244.93)	15 ³ / ₈	(390.53)	7/8 x 3 ¹ / ₂	7290	(32.43)	147.5	(66.9)

"B" (Center of axle to center of pipe)

THREADED ACCESSORIES
CPVC STRAPS
BAND HANGERS
BEAM CLAMPS
CLEVIS HANGERS
PIPE ROLLER SUPPORTS
SPLIT RING HANGERS
PIPE CLAMPS
CENTER LOAD BEAM CLAMPS
PIPE SHIELDS, INSULATION, & SADDLES
PIPE GUIDES & SLIDES
WALL BRACKETS
PIPE SUPPORTS
STRUCTURAL ATTACHMENTS
SEISMIC BRACING